

Corrales Institute for New Education

The purpose of the Corrales Institute for New Education is to imagine, invent, and facilitate the creation of a new, public place of learning for people of all ages. We imagine a Learning Park: www.neweducation.org

We invite you to join us in creating a new place of learning, where education is an embodied, social, and lifelong process among people of all ages collaborating in learning together, and developing their personal abilities to create a more humane, vibrant, and democratic society and a sustainable environment for ourselves and the health of the Earth.

Basic Principles in Our Concept of a Learning Park

Purposes of Public Education in a Learning Park

- Reclaiming democracy
- Saving and sustaining the planet
- Developing social and personal efficacy
- Living healthily
- Respecting our humanity
- Learning together with multigenerational people of all ages
- Growing the esthetic, emotional, and spiritual aspects of social life
- Using socially and economically valuable skills, understandings, and tools
- Exercising civic responsibility, ethics, and duty
- Making a good, satisfying, and sustainable personal life
- Finding the joy in learning and living



Practices of Public Education in a Learning Park

- Creating a place of learning that is as rich, dynamic, and complex as the world itself
- Creating beautiful, convivial, and comfortable environments for learning
- Engaging participants across the lifespan in facilitating intergenerational exchange
- Practicing care-driven, nurturing and mutually determined learning
- Learning widely valued social media like listening, literacy, and mathematics
- Gaining experience with tools for making, creating, and communicating
- Providing a safe place of learning for people of all ages
- Being in one another's physical presence, sharing purposes, activity, and experiences
- Emphasizing things that only can be learned through practice
- Taking part in manual and fine arts to create, imagine, share, and understand
- Practicing face-to-face, honest, open, attentive conversation at every opportunity
- Designing and equipping for making: things to use, art, science, gardens, friends...
- Evolving the place as needs, cares, and interests develop and change
- Treating others as we would if we loved them
- Valuing and accepting people for who they are, as they are, right now
- Operating on natural time appropriate for human development and purposes
- Practicing mutual respect, tolerance, inclusion, patience, grace, and kindness
- Accessing and utilizing all the resources in the surrounding communities
- Supporting and valuing the local community as a contributing member of it

What is a Learning Park?

A Learning Park is a public place of learning, where people want to be because it is vital and nourishing, where people of all ages and backgrounds go by choice to learn; to meet, do and

talk, create and make all manner of things, experience and pursue matters of mutual interest; to meditate, to play, to think freely, to challenge each other, to experiment with new things and new ideas, to exercise mind and body in an environment that enhances their relationships with nature, tools and culture, and with their communities and each other as thoughtful, curious, creative, and enthusiastic human beings.

A Learning Park serves the 21st century educational needs of children, youth, and adults, similarly to how public schools were intended to serve educational needs of the 19th and 20th centuries. A Learning Park is a collaboration among local communities, local public education authorities, nonprofit organizations, and state agencies working together to create a new organization for a new education.

A Learning Park is a little like places you already know and love: a city park, community center, community garden, nature park, studio, research park, chapter house, main street theme park, health and wellness center, exploratory science museum, performing arts center, cafe. Learning parks bring together some of the best elements of these and other places to create something totally new: a public place of learning, developed and maintained by its participants and the community it serves.

A Learning Park incorporates, on a smaller scale, samples of the various environments and work places of the surrounding communities, as well as cultural, agricultural, and natural places. For example, a park's main street will house small businesses, like a health clinic, music store, restaurant, farmers market, electronic repair service, theater, architect's studio, and more. Each of these places double as learning labs with practitioners who serve as educators as well as proprietors.

A Learning Park comfortably accommodates a multigenerational, multicultural community of learners who associate by choice in periodic and fluid groups of variable composition for variable periods of time, based on optimal learning conditions, interests, friendships, purposes, activities, or project scope and duration. This includes groupings of people with substantial differences in age, beliefs and opinions, previous experiences, and backgrounds. For example, ten-year-olds and sixty-five-year-olds might be learning together; republicans and democrats might be learning together; engineers and homeless teens might be learning together.

People of any age who have had some success doing what they love have a responsibility – even a social obligation – to pass it on, pass it down, pass it up, pass it around. Although it is generally accepted that elders have things of value to pass down, it is inarguable that youngsters have things of value to pass up. Everyone benefits and learns from these relationships.

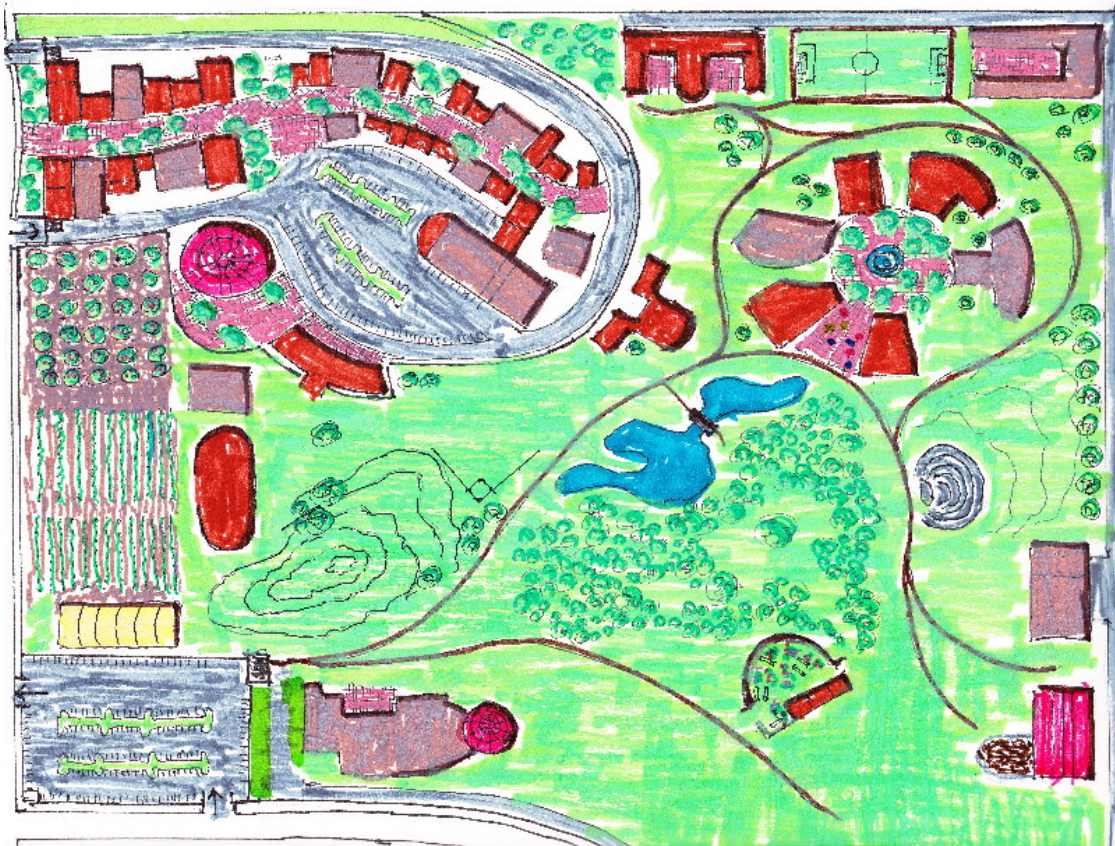
A Learning Park provides freedom of movement and association, with on-demand access to tools, materials, instruments, equipment, information, workspaces, and help from facilitators. A Learning Park has various, transformable environments for making and doing and growing and repairing things: workshops, laboratories, gardens, ponds, kitchens, playrooms; music, dance, design, theater and art studios; and venues for events, performances, games, leisure, and physical education. All of these transformable environments are designed to support learners acting on their ideas and experiencing the results or consequences of their actions.

There is not only one model that works to create a new education in a Learning Park. Any gathering of people committed to this new dream might accomplish what is needed. Ultimately, Learning Parks are about creating the best possible environments for learning, about applying a new educational ecology of learning for everyone, and about fulfilling our nation's most cherished aspirations.

Learning Park: Concept Drawing Key

Overall: 20 to 30 acres in a diverse community of 20,000 or more residents.

Upper Left: "Main Street" with up to 30 small businesses that double as learning centers for the Learning Park, with learning labs in their back rooms, (for example, a restaurant, compounding drug store, architect, music store, laundromat, furniture maker, child day care, senior day care, art gallery, clothier, performing arts center,



electronics sales and repair, organic foods grocery, hardware, book and media store, counseling center, tax and accounting service, bistro, coffee shop meeting space, second hand store, flea market, media and programming development lab, news journalism center, building arts and small home prefab, film/theater studio, etc.);

Center Left: community organic garden, orchard, green house, food processing building, farmers market, round chapter house meeting and governance center;

Lower Left: parking lot, STEAM center and museum;

Lower Right: pasture, meditation garden, barn and barnyard, maintenance and machine shop, hillside Greek theater;

Upper Right: learning centers circle [buildings specialized at times for different purposes: sciences, esthetic arts, literacy and languages, historical research, healing arts, social inquiries, engineering, etc.], cafeteria, resident buildings and games field;

Center: nature experience area, pond, woods, hill and fields.